

The logo consists of the numbers 5, 6, and 8 rendered in a white, minimalist, geometric style. Each digit is composed of straight lines and semi-circular arcs. The '5' is formed by a vertical line, a horizontal line, and two curved segments. The '6' is a single continuous shape with a circular bottom. The '8' is formed by two circles stacked vertically. The background is a dark gray with a repeating pattern of large, semi-transparent, overlapping circles and squares.

568

B R O A D W A Y

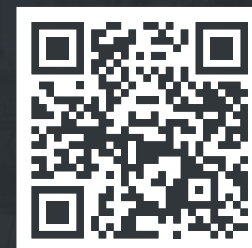
SOHO'S LARGEST FLOORPLATE

FULL FLOORS OF 30,800 SF AVAILABLE

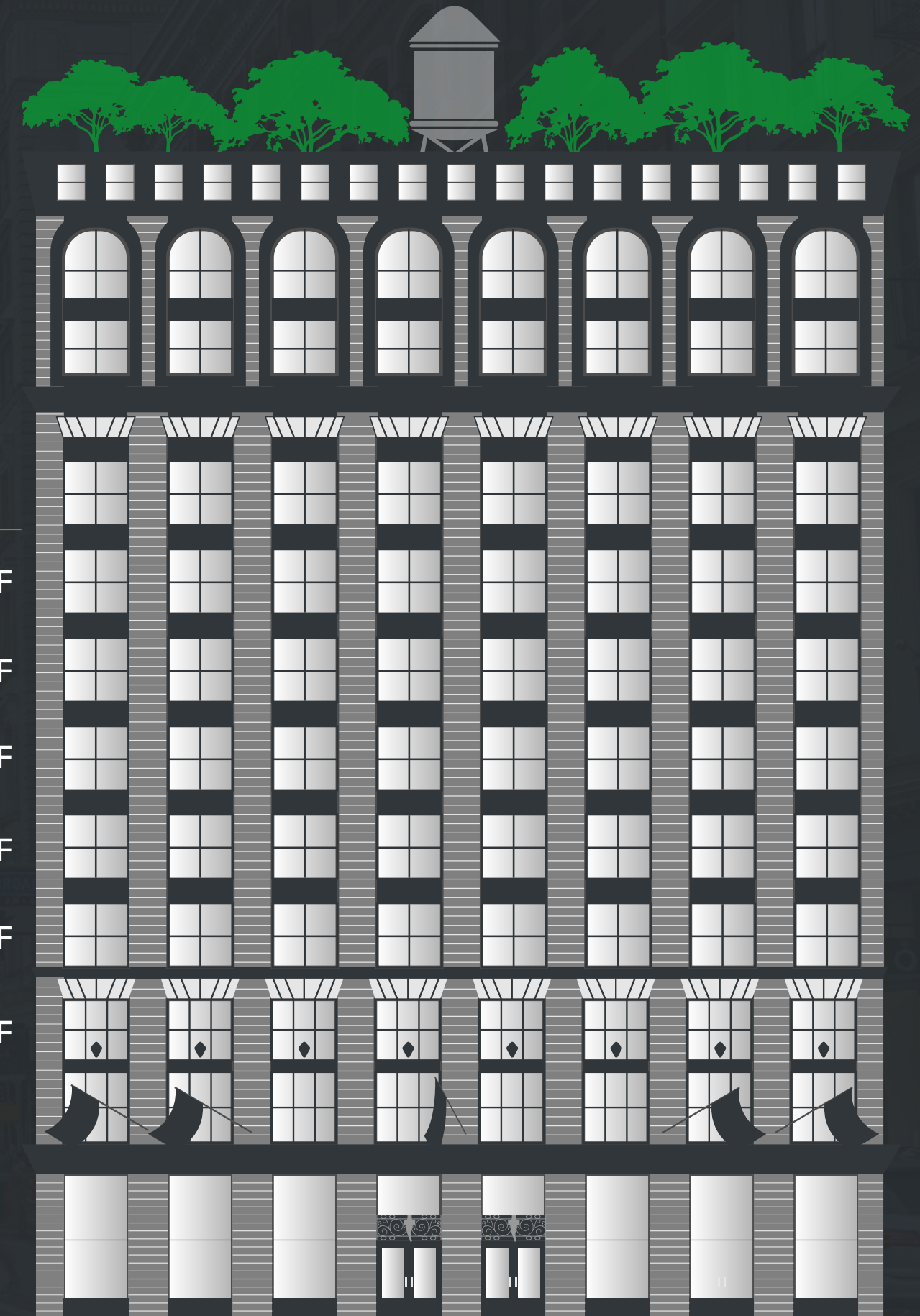
Renovation Delivering in 2026

- + **Two New, Signature Lobbies** on Broadway and Crosby Street.
- + **Prebuilt Space with an exclusive amenity lounge** ranging from **6,000 to 30,800 RSF**
- + **Activated 15,000 SF Rooftop Terrace** offering panoramic city views.
- + **Significant Signage Opportunities** with prime visibility on one of New York City's busiest streets.

Please visit our website for more information
at 568Broadway.com or scan the QR Code:



FL	RSF AVAIL.
7	13,791 SF
6	3,377 SF
5	30,800 SF
4	13,864 SF
3	15,274 SF
2	17,201 SF



NEW MODERN LOBBY
WITH CLASSIC SOHO
CHARACTER





NEWLY ACTIVATED LOBBY AT 110 CROSBY STREET

ROOFTOP TERRACE



SPECTACULAR SKYLINE VIEWS



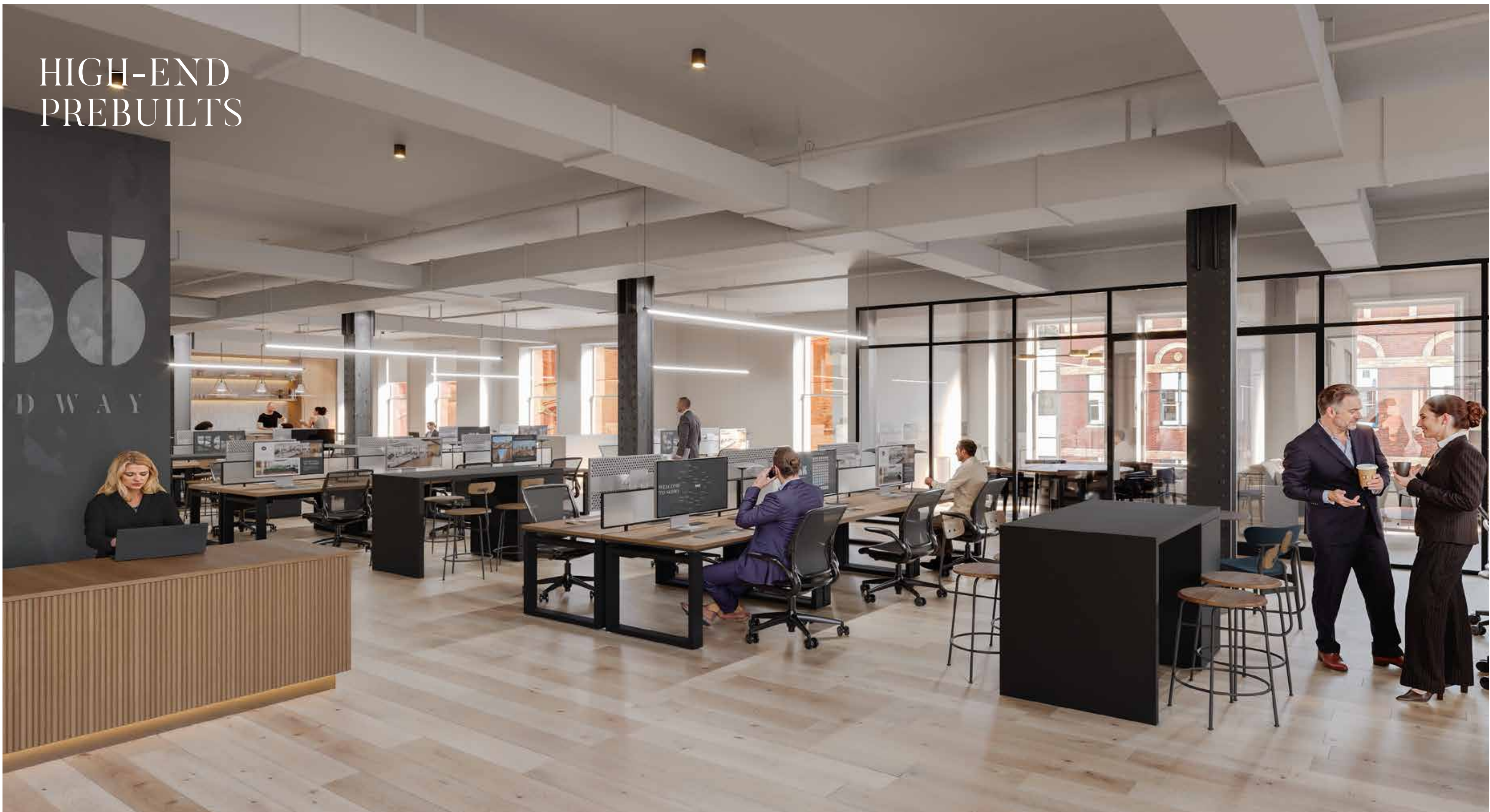
AMENITY LOUNGE



UPGRADED CORRIDORS & HIGH-END PREBUILTS



HIGH-END PREBUILTS



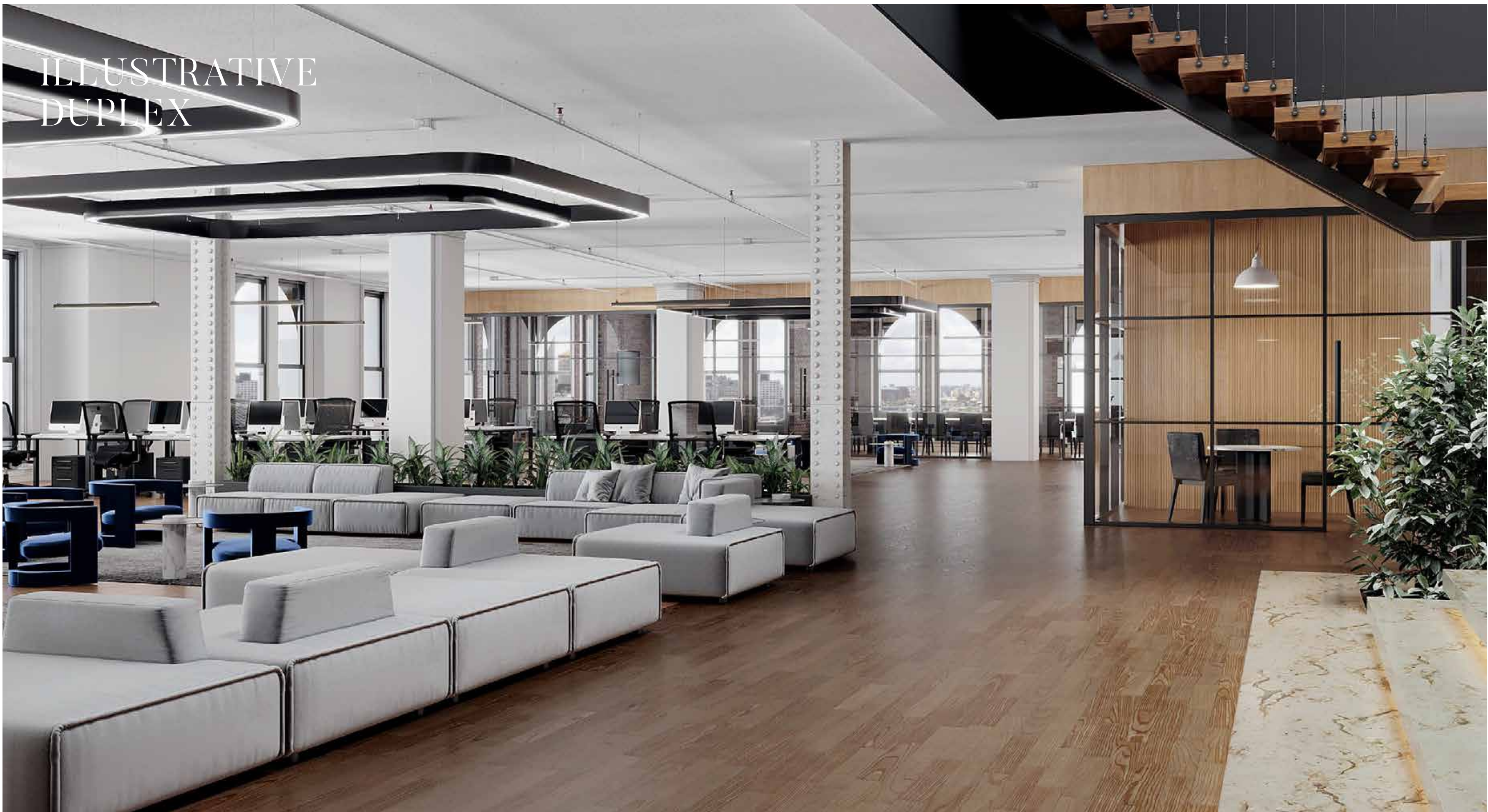
SOPHISTICATED
CONFERENCE SPACE



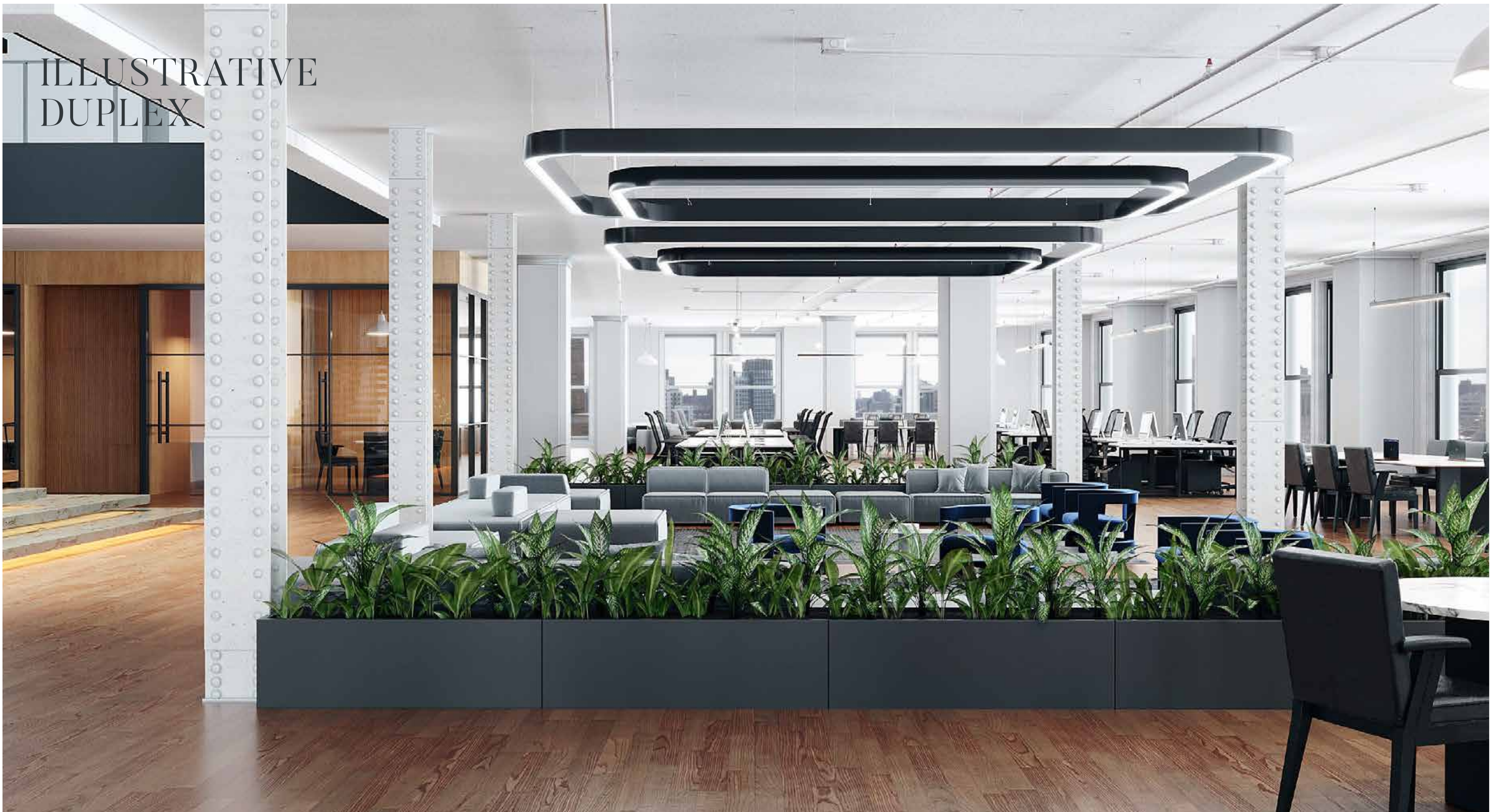
MODERN PANTRY



ILLUSTRATIVE DUPLEX



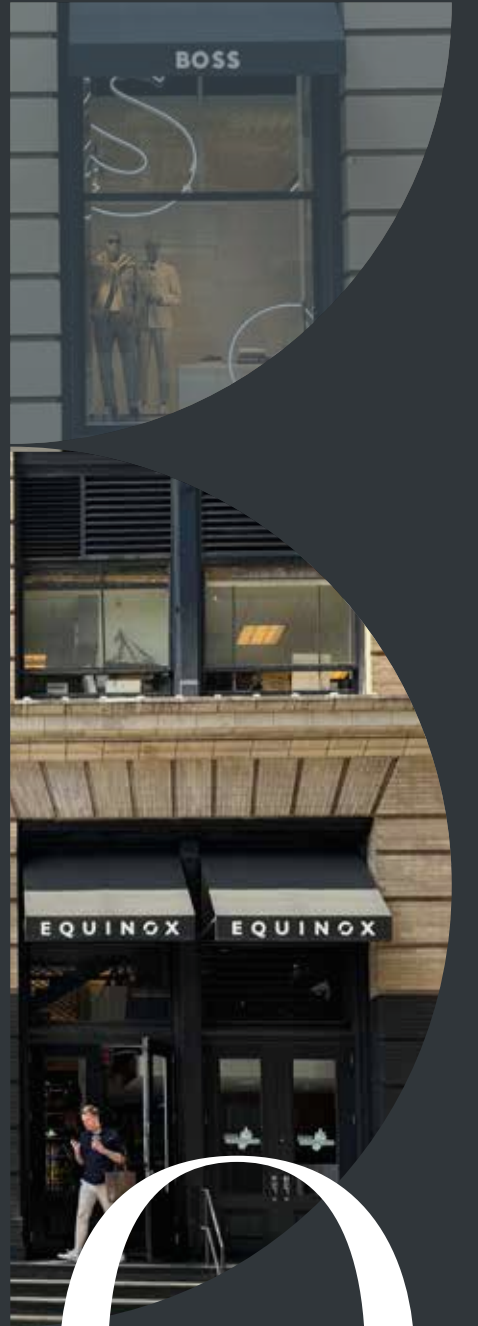
ILLUSTRATIVE
DUPLEX



ELEVATE



YOUR
WORK
IN



SOHO

ACCESSIBILITY & CONVENIENCE

5 MINUTE WALK

TRANSIT

Grand Central	14 Mins
Penn Station/ Port Authority	13 Mins
Holland Tunnel	10 Mins
World Trade	10 Mins
Union Square	6 Mins

EAT

- Sartiano's
- Torrisi
- Balthazar
- The Butcher's Daughter
- The Grey Dog
- Lure Fishbar
- Jack's Wife Feda
- Mamo
- Pera Soho
- Lure
- Fanelli's

DRINK

- (Sub)Mercer
- The Crosby Bar
- Felix Roasting
- Nomo Soho
- Grand St Social
- Mulberry St. Bar
- Gregory's Coffee

SHOP

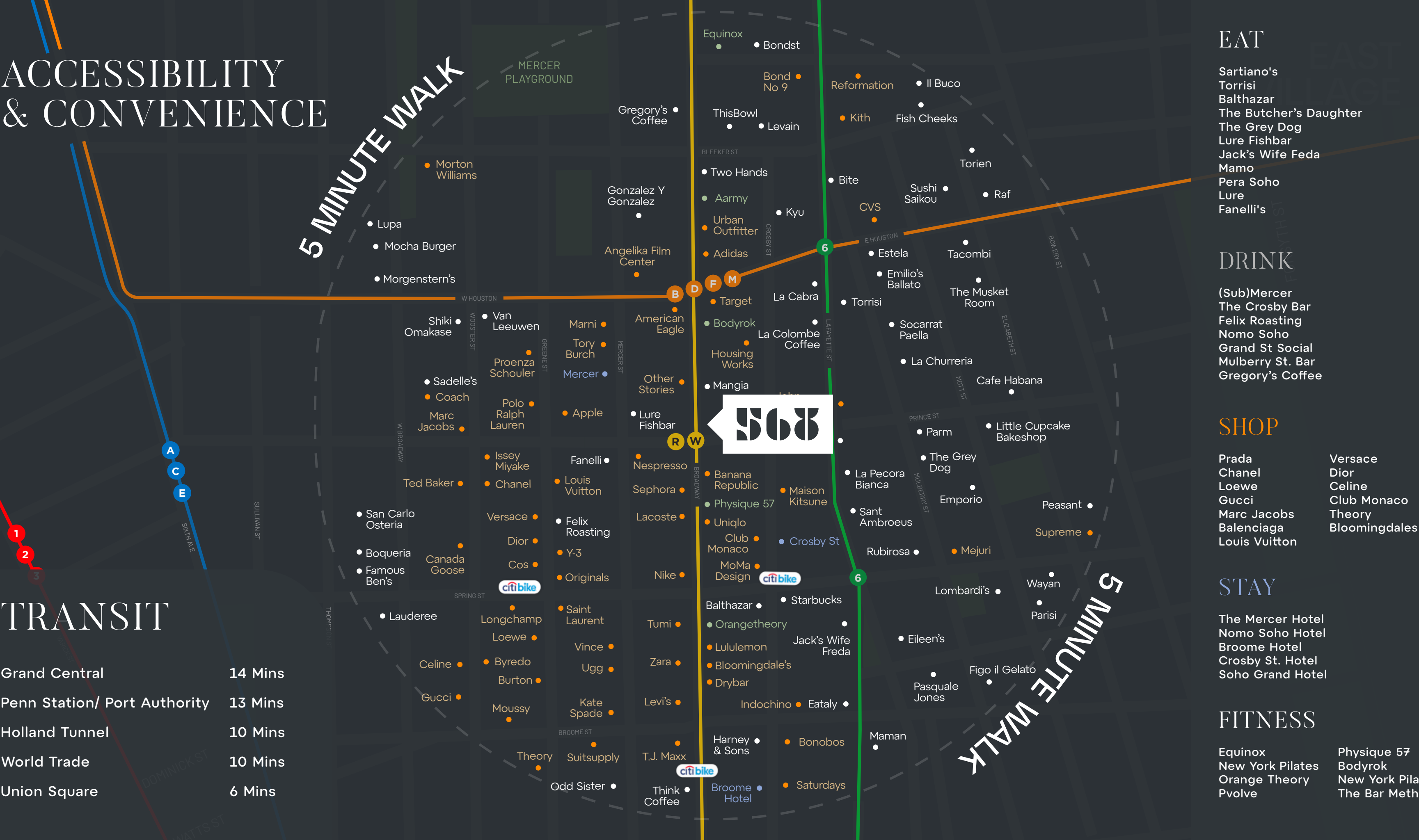
- Prada
- Chanel
- Loewe
- Gucci
- Marc Jacobs
- Balenciaga
- Louis Vuitton
- Versace
- Dior
- Celine
- Club Monaco
- Theory
- Bloomingdales

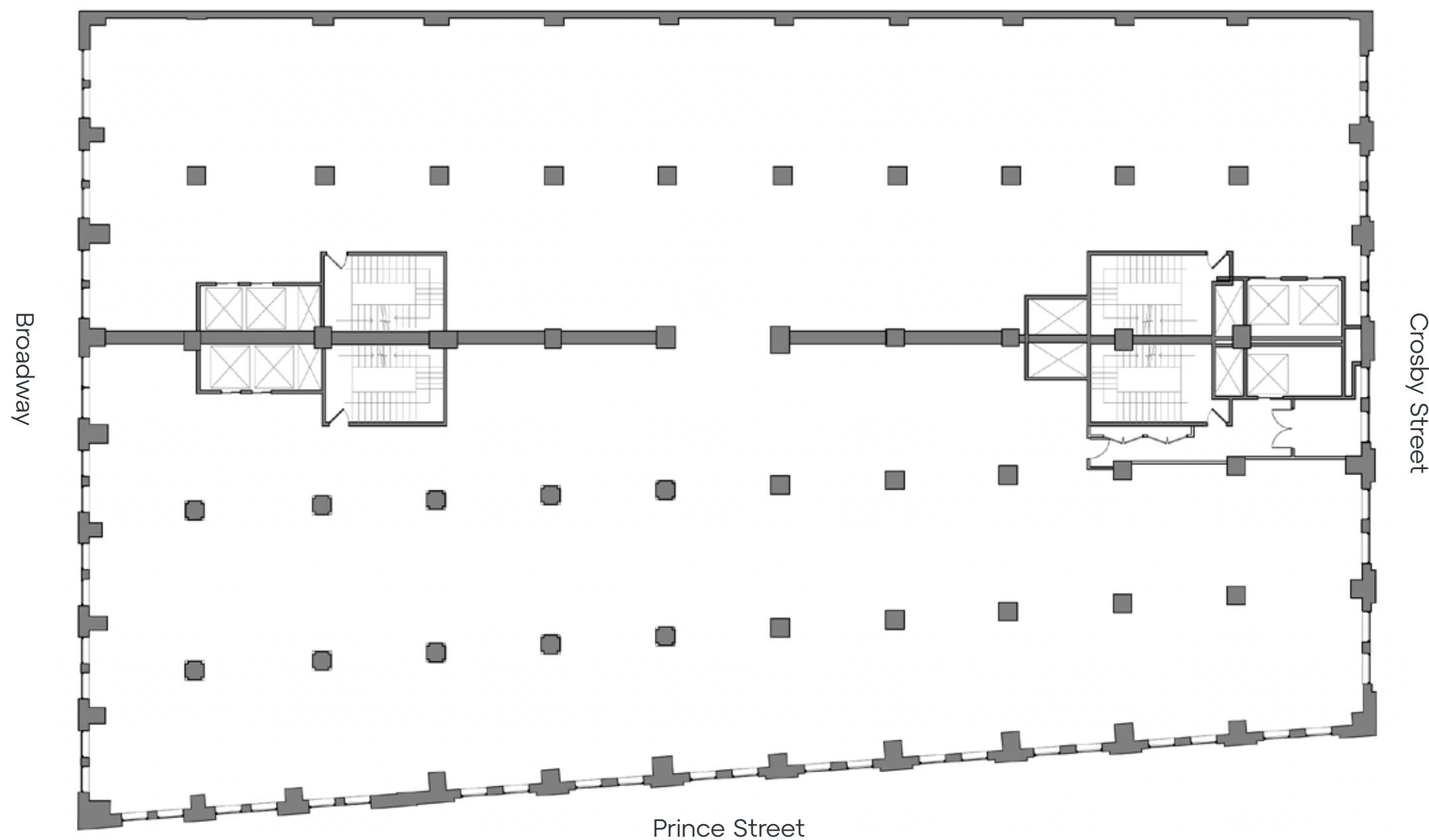
STAY

- The Mercer Hotel
- Nomo Soho Hotel
- Broome Hotel
- Crosby St. Hotel
- Soho Grand Hotel

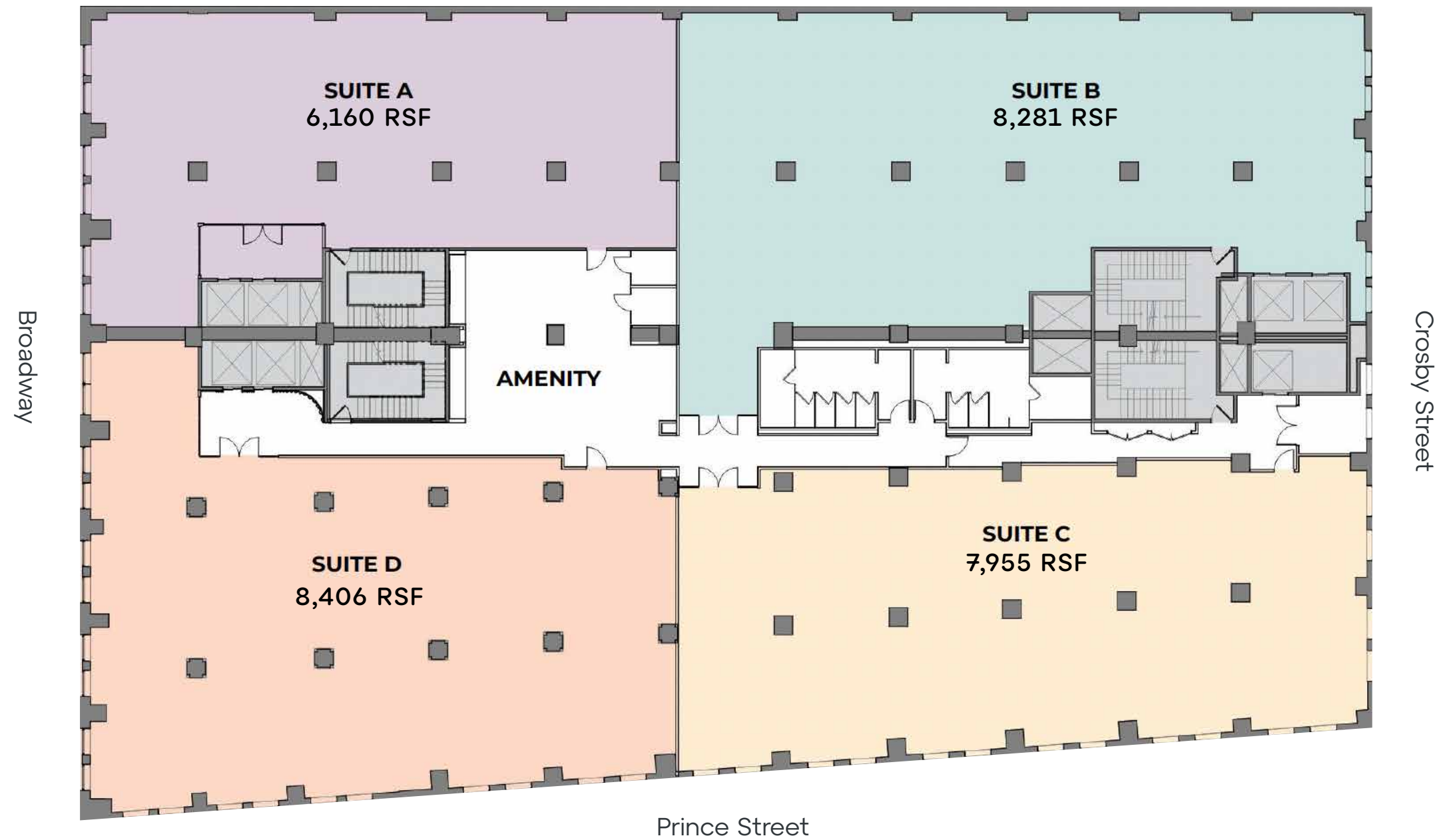
FITNESS

- Equinox
- New York Pilates
- Orange Theory
- Pvolve
- Physique 57
- Bodyrok
- New York Pilates
- The Bar Method



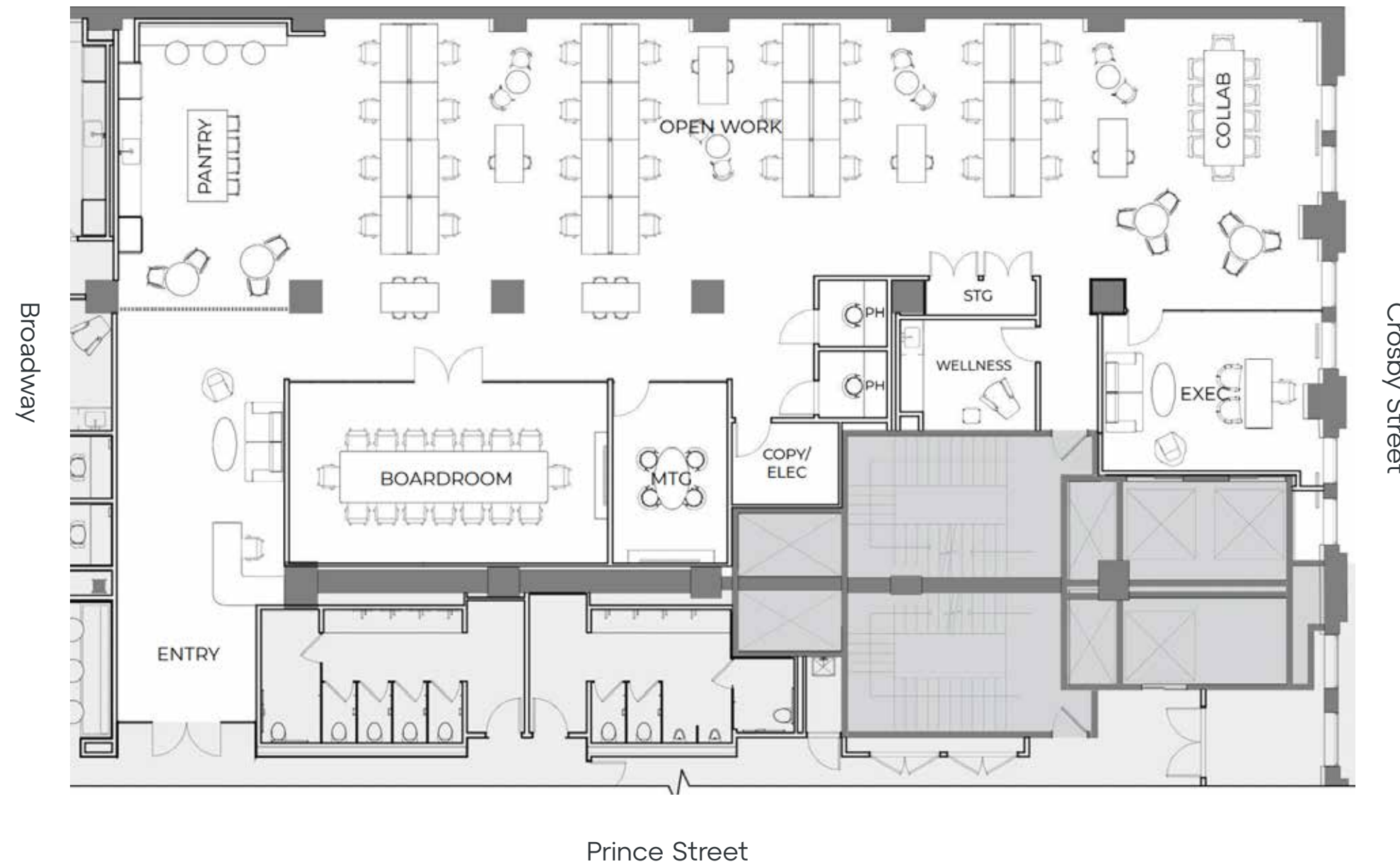


DIVIDED FLOOR LAYOUT





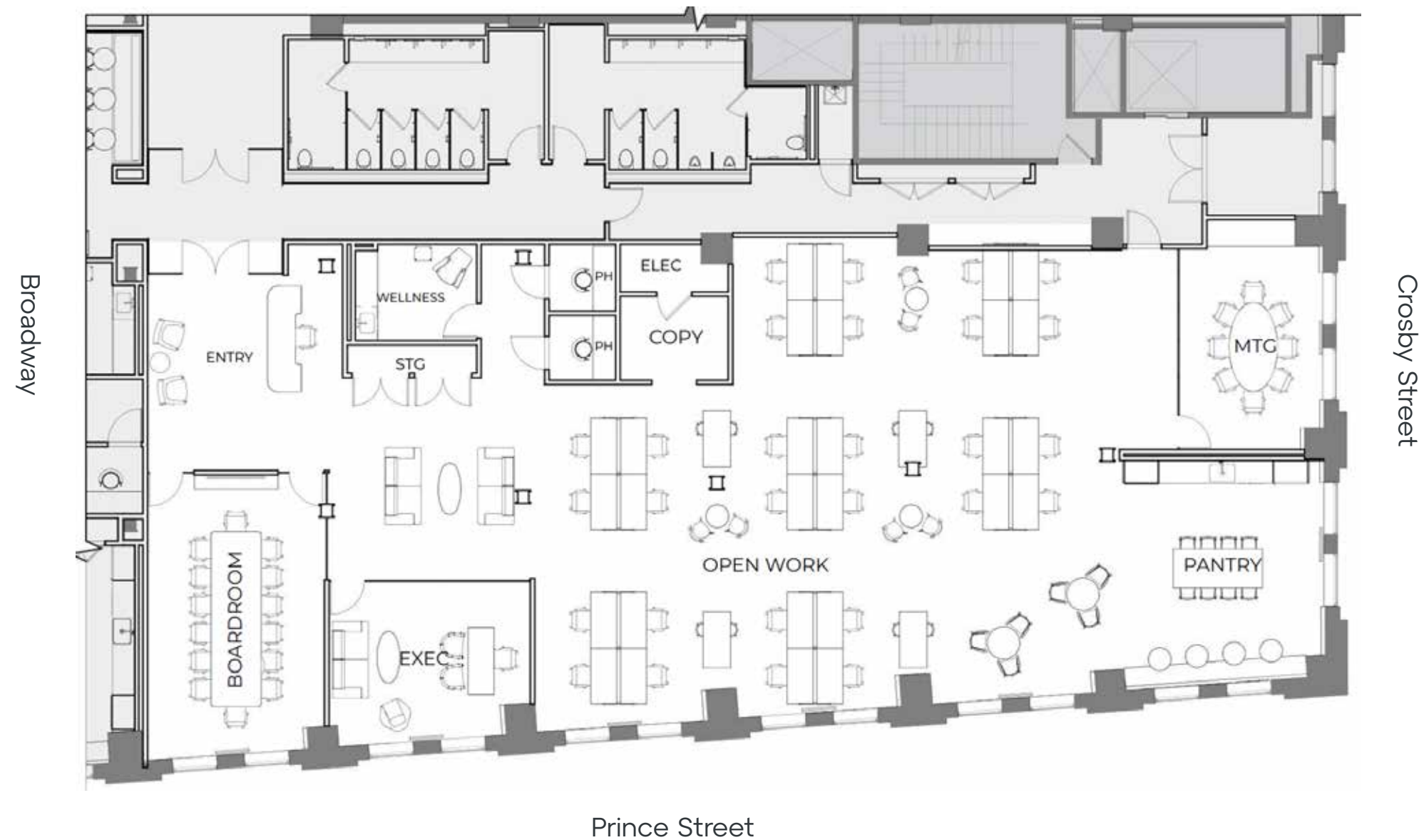
SUITE A	
18	WORKSTATIONS
1	PANTRY
1	BOARDROOM
1	MTG
2	PHONE RMS
2	EXEC OFFICE
1	WELLNESS/MOTHERS RM



SUITE B

- 28 WORKSTATIONS
- 1 PANTRY
- 1 BOARDROOM
- 1 SMALL MTG
- 1 EXEC OFFICE
- 2 PHONE ROOMS
- 1 WELLNESS/MOTHERS RM

OPEN WORK AREA w/ +16 SEATS



SUITE C

28	WORKSTATIONS
1	PANTRY
1	BOARDROOM
1	SMALL MTG
2	PHONE RMS
1	EXEC OFFICE
1	WELLNESS/MOTHERS RM



SUITE D

44	WORKSTATIONS
1	PANTRY
1	BOARDROOM
1	SMALL MTG
2	PHONE RMS
1	EXEC OFFICE
1	WELLNESS/MOTHERS RM

TECHNICAL SPECIFICATIONS

GROSS BUILDING AREA	330,000 rsf
FLOORS	12 Stories
YEAR BUILT/ RENOVATED	1895/2026
CONSTRUCTION	Structural steel, terra cotta, concrete, cast stone
FLOOR SIZES	Office floors 2-11 : 30,802 rsf
FLOOR HEIGHTS (SLAB TO SLAB)	Floors 2-11 : 14’ - 0” Ground : 20’ - 0”
OUTDOOR AREA	15,000 SF Roof deck
BUILDING AMENITIES	Activated 15,000 SF roof deck, tenant lounge, cellar storage, private entrance and lobby on Crosby Street
BICYCLE STORAGE	Bicycle storage in cellar
HVAC/BUILDING SYSTEMS	New systems proposed for renovation, cooling tower

SECURITY	Uniformed security guards staffed at the concierge desk 24 hours a day, 7 days per week
FIRE STAIRS	Stairwells are oversized to exceed New York City and International Building Code Requirements
LIVE LOAD	All tenant floors are 66 lbs. live load.
RESTROOMS	Restrooms are 100% ADA compliant and include extra fixtures
ADA ACCESSIBILITY	The building is fully ADA compliant Building Management
ELECTRICAL	6 Watts per rsf demand load exclusive of base building air conditioning
TELECOM	Spectrum, Verizon, Pilot Fiber, Century Link, Global Capacity, Bway Net
ELEVATORS	Six (6) Passenger elevators One (1) Oversized freight elevator
LIFE SAFETY	The building Class “E” addressable fire alarm system with Fire Command Station located in the main lobby. The building is fully sprinklered in accordance with the NYC Building code and each floor has an individual smoke exhaust system



BRADWAY

LEASING TEAM

Howard Hersch
howard.hersch@nmrk.com
212-655-0626

Greg Conen
greg.conen@nmrk.com
212-372-2419

Jennifer Schreiber
jennifer.schreiber@nmrk.com
212-372-0715

Natalie Serio
natalie.serio@nmrk.com
212-331-0123

Victoria Purcell
victoria.purcell@nmrk.com
646-970-6282

NEWMARK